



TERRE HAUTE CASINO RESORT

TERRE HAUTE, INDIANA

ARCHITECT R2ARCHITECTS, LLC

INSTALLER DIVISION 7 METALS

APPLICATION HOSPITALITY

TYPE NEW CONSTRUCTION

YEAR 2024

PRODUCT SPECTRUM FAÇADES

FASTENING SYSTEM SPECTRUM UNITY

PHENOLIC PANEL DECORS USED TRESPA® METEON® UNITY 2 PANEL SPECTRUM



SPECTRUM
FAÇADES

CASE STUDY - HOSPITALITY

Selection of Allied Technical Solutions (ATS) & Spectrum Façades

Reasons for Selection:

- **Variety of Panel Styles/Textures:** ATS offers a wide range of panel designs that cater to diverse architectural needs, allowing for creative freedom in façade designs.
- **Hidden Fasteners:** The use of hidden fasteners results in a cleaner and more sophisticated exterior appearance, avoiding the industrial look of exposed fasteners.
- **Interchangeable Panel Dimensions:** The flexibility in panel thickness and length supports intricate mosaic patterns within a consistent modular system, enhancing design versatility without compromising structural integrity.
- **Proven Track Record:** Previous successful implementations of Spectrum Façades provided confidence in their performance and durability, backed by positive feedback from earlier projects.



“Having worked with Lorrie Aracri on multiple projects over the years, it should be noted that she’s been not only helpful with her knowledge, details, samples, etc. but stays involved throughout the project and always looks for ways, like this, to “show off” the work.”

Michael Powell, Associate |
Senior Project Manager R2Architects

Introduction

Set in Terre Haute, Indiana, the Terre Haute Casino Resort stands as a beacon of modern design and architectural innovation. Owned by Churchill Downs, the resort utilizes Spectrum Façades, which enhanced the aesthetic appeal of the facility and demonstrated effectiveness in modular design and installation ease. This transformation was guided by the expertise of R2A, an award-winning Architectural, Interior Design, and Planning firm based in Voorhees, New Jersey.

Known for their comprehensive design solutions across diverse sectors—including Casino/Gaming, Commercial, Hospitality, Corporate, Healthcare and more—R2A brought a wealth of experience in creating dynamic, functional spaces to this project. This case study explores the selection of Spectrum Façades, the collaborative experience with Allied Technical Solutions, and the unique features that make Terre Haute Casino Resort a landmark project, reflecting R2A's broad expertise in handling complex architectural endeavors.



CASE STUDY - HOSPITALITY

Collaborative Experience with ATS

Working Relationship:

Partner-like Collaboration: ATS acts as a crucial partner, bringing visions to life with comprehensive support throughout the project—from bidding to execution.

Support and Recommendations: Their proactive approach in providing recommendations, detailed technical support, and timely sample deliveries accelerated the design process and decision-making.

Personalized Service: Working with Lorrie Aracri from ATS highlighted personalized service, with dedicated involvement throughout the project lifecycle and initiatives that enhance project visibility and showcase completed work effectively.



Orest Poslusznyj,
Project Architect,
R2 Architects

“Working with ATS is like having a partner help bring your vision to life. They are great because they provide invaluable bidding and technical support. Furthermore, ATS was quick to not only provide recommendations but ensure that samples (both small and large size) were received quickly during the design process.”

The Uniqueness of Terre Haute Casino Resort

Special Features:

Architectural Cohesion: The project features varying building types with different finishes. Spectrum Façades helped unify these diverse elements into a cohesive aesthetic that defines the resort’s visual identity.

Cultural and Economic Impact: As a new, world-class facility in a formerly rural area, the resort is set to become a regional hub for gaming, dining, and entertainment, significantly impacting local tourism and economy.

Comprehensive Entertainment Offerings: The Terre Haute Casino Resort, a \$290 million investment, features a robust array of entertainment options including over 1000 slot machines, 50 electronic and 30 table games, alongside six live poker games. Further enhancing its appeal, the resort boasts six bars, five diverse dining venues, and an event center capable of hosting concerts and significant events, establishing it as a premier entertainment destination.



CASE STUDY - HOSPITALITY

Recommendation

Endorsement for ATS & Spectrum Façades:

Highly Recommended: Given the variety and the attention to detail, alongside strong technical and customer support, ATS Spectrum Façades are highly recommended for architects seeking reliable and aesthetically flexible façade solutions.

Conclusion

The Terre Haute Casino Resort exemplifies innovative architectural design through the use of ATS & Spectrum Façades. The project not only stands as a testament to modern building techniques but also highlights the importance of choosing the right partners in bringing architectural visions to life. The success of this project can serve as a guideline for future developments, advocating for thoughtful material selection and collaborative engagement with suppliers.



SUSTAINABILITY

At the heart of our environmental product strategy, Spectrum focuses on four key elements:



DURABILITY

- Our main driver of environmental sustainability is durability.
- By needing fewer replacements, long-lasting products entail less use of resources, lower emissions of pollutants, and a smaller amount of waste than short-lifespan goods.
- Additionally, our products' long expected useful life is complemented by low maintenance levels.

LOW-CARBON MATERIALS

- Our phenolic panel inputs have robust Environmental Product Declarations (EPD) and are evaluated using Life Cycle Analysis (LCA).
- We use panels made from 70% wood fibers sourced from sustainable forests. As such, Spectrum products act as a natural source of carbon capture.



LOW CARBON MANUFACTURING PROCESS

Spectrum's manufacturing process focuses on reduction of CO² emissions through 3 key strategies.

- Sustainable sources of power.
- Lowering overall energy consumption.
- Reduction of waste through panel optimization.

END-USER SAFETY

- Spectrum products have low VOC (Volatile Organic Compounds) emissions, contributing to a healthier environment. Green Guard Gold certifications available.
- The inherent properties of phenolic panels do not contribute to mold or bacterial growth and are safe for food-grade applications.



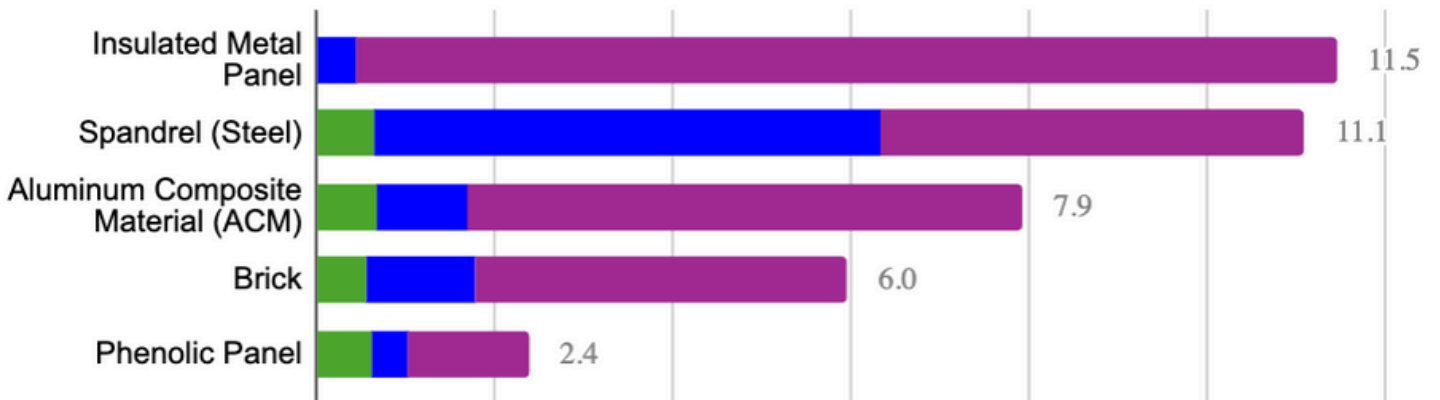


SUSTAINABILITY

Spectrum Façade panels are made of 70% wood fiber. The raw material is both renewable and a natural carbon capture sourced from suppliers holding FSC or PEFCM certification. Complete Life Cycle Analysis (LCA) and Environmental Product Declarations (EPD) are available for our core components. Local production and fabrication in North America result in a lower overall carbon footprint. Electricity used in processing is generated primarily by low-carbon sources.

LOWER EMBODIED CARBON THAN OTHER FACADE SYSTEMS

Facade Wall Assemblies - Global Warming Potential (GWP kgCO₂e/sf)



SOURCE: PAYETTE. KALEIDOSCOPE: EMBODIED CARBON DESIGN TOOL - JULY 2024

10 YEAR PRODUCT WARRANTY

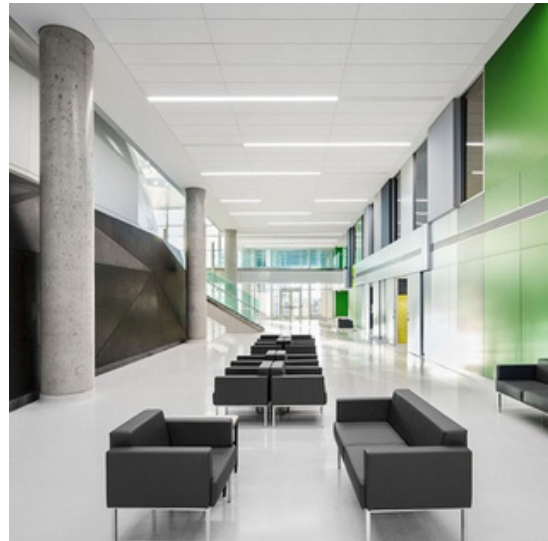


ABOUT SPECTRUM

We Manufacture Solid Phenolic Architectural Products



FACADES



WALL LININGS



LOCKERS



SCIENTIFIC WORKSURFACES

We leverage the material advantages of solid phenolic panels to create products with a focus on design freedom, sustainability and category leading performance. Built to withstand the test of time, our solutions enhance the aesthetics of buildings and provide long-term value to building owners.

ESTIMATING@ATS-SALES.CA

1-855-444-0588

SPECIFICATIONS & DETAIL DRAWINGS AVAILABLE

SPECTRUM-BUILT.COM