



# LAUDERHILL TRANSIT STATION

## LAUDERHILL, FLORIDA

<b>ARCHITECT</b>	SALTZ MICHELSON
<b>INSTALLER</b>	KCR INNOVATIVE
<b>REPRESENTATIVE</b>	ARCHSPEC - SOUTHEAST
<b>APPLICATION</b>	TRANSIT
<b>TYPE</b>	NEW CONSTRUCTION
<b>YEAR</b>	2020

**PRODUCT** SPECTRUM FAÇADES

**FASTENING SYSTEM** TS-110 EXPOSED FASTENING SYSTEMS

**PHENOLIC PANEL** TRESPA® METEON®

### DECORS USED

A08.4.5 RUSTY RED	A11.8.0 CERAMIC GRIEGE
A8.2.3 SALMON	A21.5.1 MID GREY
A03.1.0 PASTEL GREY	



## LAUDERHILL MALL TRANSIT STATION

Designed by architectural firm Saltz Michelson to serve 8,000 people per day, Lauderhill Mall Transit Station is made up of 10 bus bays, a solar canopy, and 11,000 sf of Trespa Meeon in five different colors.

Saltz Michelson chose Trespa Meeon as a trusted cladding solution to help withstand the extreme Florida climate, and ability to withstand heavy vehicle and pedestrian traffic as well. General Contractor, Emerald Construction worked with the installer, KCR Innovative, to facilitate a complex panel pattern and install.

# SUSTAINABILITY

At the heart of our environmental product strategy, Spectrum focuses on four key elements:



## DURABILITY

- Our main driver of environmental sustainability is durability.
- By needing fewer replacements, long-lasting products entail less use of resources, lower emissions of pollutants, and a smaller amount of waste than short-lifespan goods.
- Additionally, our products' long expected useful life is complemented by low maintenance levels.

## LOW-CARBON MATERIALS

- Our phenolic panel inputs have robust Environmental Product Declarations (EPD) and are evaluated using Life Cycle Analysis (LCA).
- We use panels made from 70% wood fibers sourced from sustainable forests. As such, Spectrum products act as a natural source of carbon capture.



## LOW CARBON MANUFACTURING PROCESS

Spectrum's manufacturing process focuses on reduction of CO<sup>2</sup> emissions through 3 key strategies.

- Sustainable sources of power.
- Lowering overall energy consumption.
- Reduction of waste through panel optimization.

## END-USER SAFETY

- Spectrum products have low VOC (Volatile Organic Compounds) emissions, contributing to a healthier environment. Green Guard Gold certifications available.
- The inherent properties of phenolic panels do not contribute to mold or bacterial growth and are safe for food-grade applications.



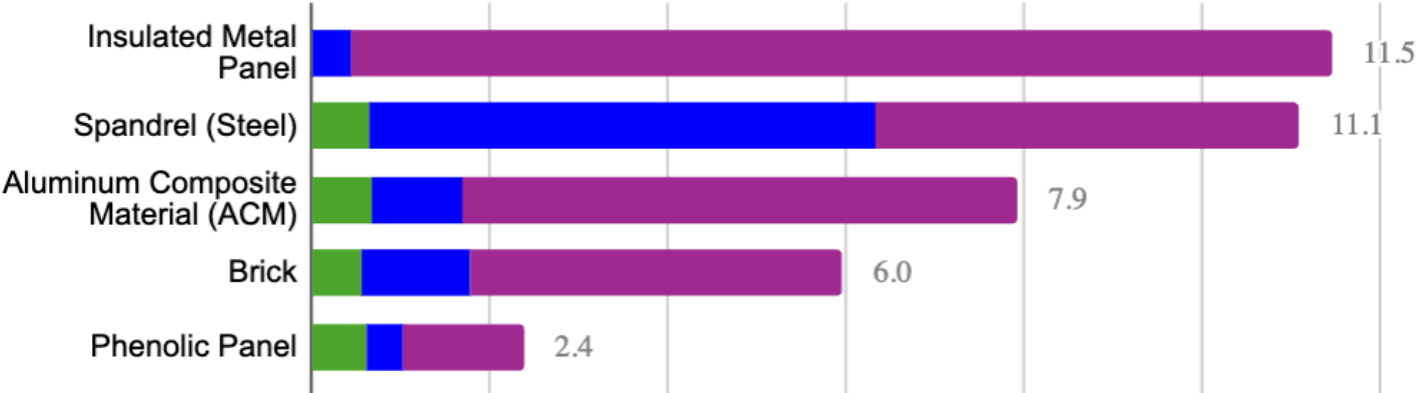


# SUSTAINABILITY

Spectrum Façade panels are made of 70% wood fiber. The raw material is both renewable and a natural carbon capture sourced from suppliers holding FSC or PEFC™ certification. Complete Life Cycle Analysis (LCA) and Environmental Product Declarations (EPD) are available for our core components. Local production and fabrication in North America result in a lower overall carbon footprint. Electricity used in processing is generated primarily by low-carbon sources.

## LOWER EMBODIED CARBON THAN OTHER FACADE SYSTEMS

Facade Wall Assemblies - Global Warming Potential (GWP kgCO<sub>2</sub>eq/sf)



SOURCE: PAYETTE. KALEIDOSCOPE: EMBODIED CARBON DESIGN TOOL - JULY 2024

10 YEAR PRODUCT WARRANTY

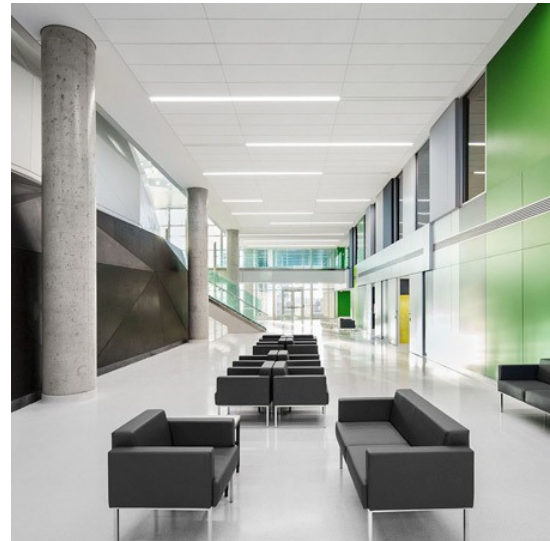


# ABOUT SPECTRUM

**We Manufacture Solid Phenolic Architectural Products**



**FACADES**



**WALL LININGS**



**LOCKERS**



**SCIENTIFIC WORK SURFACES**

**We leverage the material advantages of solid phenolic panels to create products with a focus on design freedom, sustainability and category leading performance. Built to withstand the test of time, our solutions enhance the aesthetics of buildings and provide long-term value to building owners.**

[ESTIMATING@ATS-SALES.CA](mailto:ESTIMATING@ATS-SALES.CA)

1-855-444-0588

SPECIFICATIONS & DETAIL DRAWINGS AVAILABLE

[SPECTRUM-BUILT.COM](http://SPECTRUM-BUILT.COM)



**Lynn Williamson**

[ywn@archspectsales.com](mailto:ywn@archspectsales.com)