



FISHELIGH DRIVE RESIDENCE

SCARBOROUGH, ONTARIO, CANADA

ARCHITECT TAYLOR SMYTH ARCHITECTS

INSTALLER ARTHUR ROSS LTD.

APPLICATION RESIDENTIAL

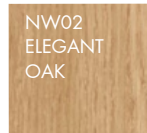
TYPE NEW CONSTRUCTION

YEAR 2020

PRODUCT SPECTRUM FACADES

FASTENING SYSTEM SPECTRUM UNITY AND EXPOSED SYSTEM ATS150

PHENOLIC PANEL DECORS USED TRESPA® METEON® NW02



“A TORONTO HOME THAT MAXIMIZES VIEWS AND ITS SURROUNDING LANDSCAPE”

HOMESNAPSHOTS, LINKEDIN



The clients, Jesleen and Jihad, a young professional couple expecting their first child, approached Taylor Smyth to design a new residence. They had been impressed by one of their other contemporary houses nearby, winner of the People’s Choice Award for the Ontario Association Design Excellence Awards (“House on the Bluffs”). Both sites feature breathtaking views over Lake Ontario, perched fifty feet above the lake at the edge of the cliff formation known as the Scarborough Bluffs.

Maximizing the views of the lake and embracing the landscape were guiding design inspirations. The house is focused on a two-story great room with a skylight along one side and is fully glazed at the back, with large sliding doors that open out to the backyard and swimming pool. An exterior planter extends inside, along with a vertical screen of oak slats, to define the separation between the great room and dining room. An open feature stair winds through the center of the house up to the 3rd-floor roof terrace, specifically

requested by the client where they could enjoy spectacular views of the lake above the tree canopy.

Outside, the white stucco walls and black metal accent panels are combined with warm oak-look phenolic panels (Trespa) on the garage door and soffits, chosen for their no-maintenance composition, important considerations in Ontario’s widely fluctuating summer and winter climate.

**SPECTRUM
FAÇADES**

PHOTOGRAPHY BY: DOUBLESPEACE PHOTOGRAPHY

ARTICLE BY HOMESNAPSHOTS: [HTTPS://HOMESNAPSHOTS.COM/PROJECTS/10023/FISHLIGHT-DRIVE-RESIDENCE/](https://homesnapshots.com/projects/10023/fishleigh-drive-residence/)

CASE STUDY - RESIDENTIAL

The material palette inside features light oak floors throughout, with accents of both white and black large-scale porcelain, the former reproducing the rich patterns of Statuario marble. The second floor contains three bedrooms. The master bedroom features a spacious and luxurious ensuite bathroom and walk-in closet, where the white and black porcelain slabs are combined to create a dramatic contrast.

Since moving into the house, the client has welcomed their second child, and the house has become a frequent destination for large extended family events.

Fishleigh Drive is a beautiful street in Scarborough Ontario, located on the hilltop of Scarborough Bluffs. This area is famous for its luscious scenery overlooking Lake Ontario and picturesque cliffs.

This 4,500 square foot house has an open concept consisting of many windows and Trespa panels lining the garage and various walls on the back of the house.

The colors used for this project were Trespa® Meteon® NW02 Classic Oak, giving the house a modern chic look that draws attention to passersby.

The woodgrain finish against the light and dark shades of the rest of the house creates a beautiful contrast and breaks up the house dynamic, contributing to the overall modern concept.



SUSTAINABILITY

At the heart of our environmental product strategy, Spectrum focuses on four key elements:



DURABILITY

- Our main driver of environmental sustainability is durability.
- By needing fewer replacements, long-lasting products entail less use of resources, lower emissions of pollutants, and a smaller amount of waste than short-lifespan goods.
- Additionally, our products' long expected useful life is complemented by low maintenance levels.

LOW-CARBON MATERIALS

- Our phenolic panel inputs have robust Environmental Product Declarations (EPD) and are evaluated using Life Cycle Analysis (LCA).
- We use panels made from 70% wood fibers sourced from sustainable forests. As such, Spectrum products act as a natural source of carbon capture.



LOW CARBON MANUFACTURING PROCESS

Spectrum's manufacturing process focuses on reduction of CO² emissions through 3 key strategies.

- Sustainable sources of power.
- Lowering overall energy consumption.
- Reduction of waste through panel optimization.

END-USER SAFETY

- Spectrum products have low VOC (Volatile Organic Compounds) emissions, contributing to a healthier environment. Green Guard Gold certifications available.
- The inherent properties of phenolic panels do not contribute to mold or bacterial growth and are safe for food-grade applications.



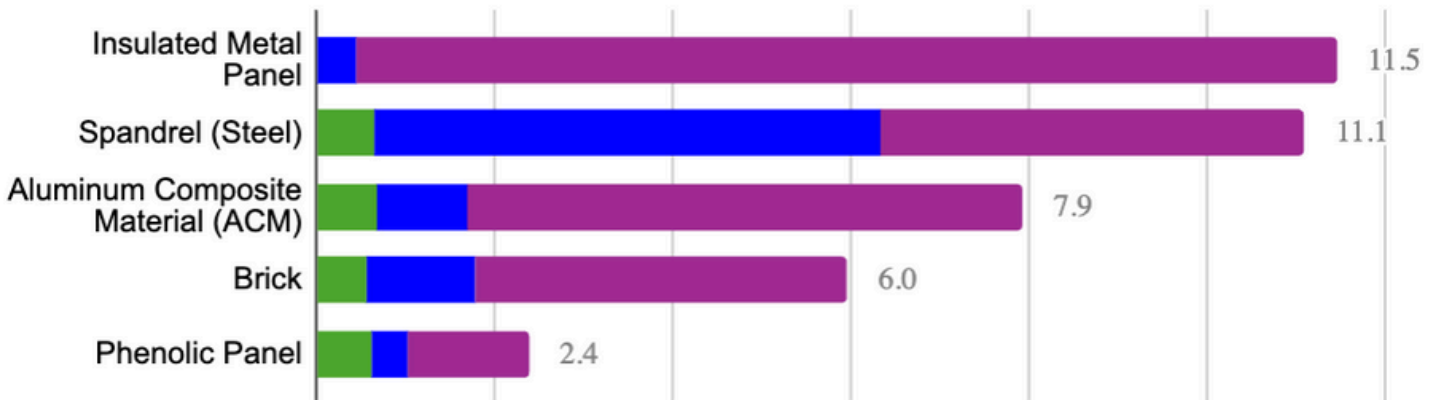


SUSTAINABILITY

Spectrum Façade panels are made of 70% wood fiber. The raw material is both renewable and a natural carbon capture sourced from suppliers holding FSC or PEFCM certification. Complete Life Cycle Analysis (LCA) and Environmental Product Declarations (EPD) are available for our core components. Local production and fabrication in North America result in a lower overall carbon footprint. Electricity used in processing is generated primarily by low-carbon sources.

LOWER EMBODIED CARBON THAN OTHER FACADE SYSTEMS

Facade Wall Assemblies - Global Warming Potential (GWP kgCO₂eq/sf)



SOURCE: PAYETTE. KALEIDOSCOPE: EMBODIED CARBON DESIGN TOOL - JULY 2024

10 YEAR PRODUCT WARRANTY

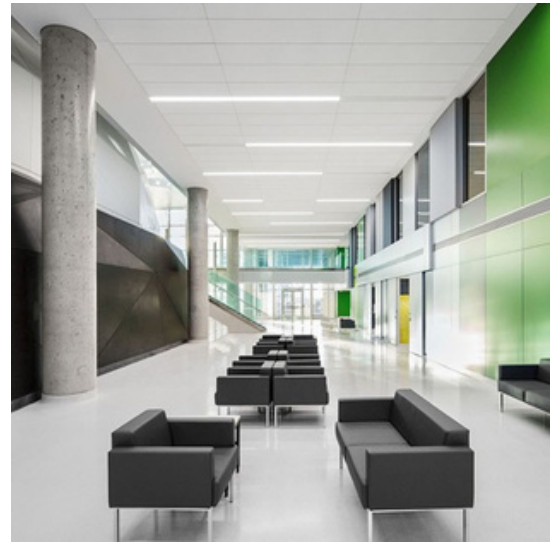


ABOUT SPECTRUM

We Manufacture Solid Phenolic Architectural Products



FACADES



WALL LININGS



LOCKERS



SCIENTIFIC WORK SURFACES

We leverage the material advantages of solid phenolic panels to create products with a focus on design freedom, sustainability and category leading performance. Built to withstand the test of time, our solutions enhance the aesthetics of buildings and provide long-term value to building owners.

ESTIMATING@ATS-SALES.CA

1-855-444-0588

SPECIFICATIONS & DETAIL DRAWINGS AVAILABLE

SPECTRUM-BUILT.COM